

Installing Product Bottle into the Triton™ Dispenser:



1. Pull off shipping cap (do not twist).
2. Using both hands, hold bottle at an angle and insert tab on top of bottle into a slot at top of dispenser. Inserting top of bottle into dispenser pierces a hole in bottle to allow venting and prevent bottle from collapsing.

Bottle piercing feature is sharp. To avoid injury DO NOT TOUCH.
3. Push bottom of bottle into dispenser to lock into place.
4. Operate push bar once to engage pump. Dispenser is ready for use.

Operating the Triton™ Dispenser:



Depress push bar. Soap is dispensed behind the push bar.

Removing Bottle from the Triton™ Dispenser:



1. Grasp bottle with both hands. Pull bottom of bottle forward and upwards at an angle to disengage pump.
2. Remove bottle from dispenser.

NOTE: DO NOT invert bottle. Residual product may drain from vent hole in top of bottle.



2 LITER and 4 LITER DISPENSER INSTRUCTIONS



BETCO®
888-GO BETCO | betco.com

©2021 Betco Corporation
All Rights Reserved.
400 Van Camp Road
Bowling Green, Ohio 43402
Item #91251-92



CAUTION:

Correct Installation of this unit to ensure proper function and safety is the responsibility of the installer.

It is the installer's responsibility to ensure that installation of this unit complies with all applicable codes, standards and regulatory requirements.

Please completely read and understand this cautionary note and all installation or maintenance instructions before proceeding with installation.

DO NOT install this unit above heat sources that may cause drying of the soap or soap nozzle/outlet.

DO NOT install this unit where a failure of the mounting system, or dripping of soap or water from hands may cause damage to equipment or create a potential safety hazard.

DO NOT TOUCH bottle-piercing feature. Bottle piercing feature is sharp and may cause injury to fingers if touched.

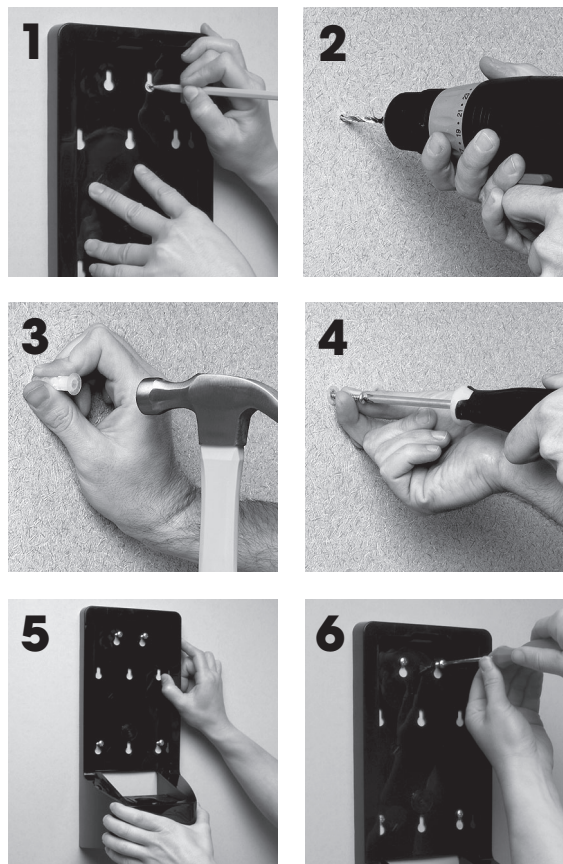
Mounting the Triton™ Dispenser with Double Sided Tape:

Wipe surfaces with supplied alcohol wipe before applying tape. Surfaces should be thoroughly clean & dry. Do not fill unit with product for 24 hours after mounting.

Note: Double sided tape should only be used to secure the unit to flat, smooth surfaces that do not have chemical residue or coatings. Some tile surfaces have treatments that may inhibit adhesion of tape. Adhesion of tape to tile should be tested before filling dispenser. Do not use double sided tape with: concrete, brick or masonry surfaces; surfaces that have a coating/chemical impregnation or porous surfaces.

Mounting the 4L Triton™ Dispenser with Anchors and Screws:

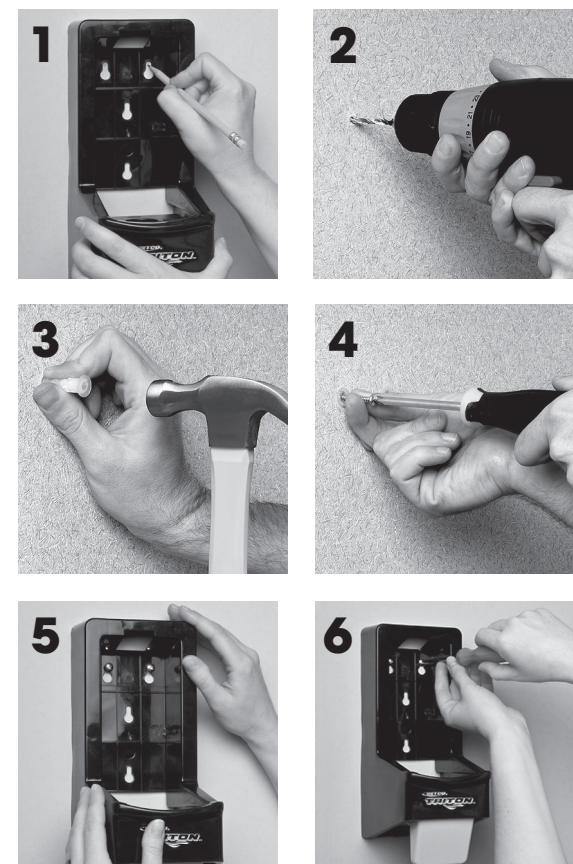
(Recommended mounting method, anchors and screws are included.)



1. Using dispenser as a template, mark hole locations on wall. (To be in compliance with ADA regulations, the dispenser should be mounted no more than 48" from the ground.)
2. Drill (4) 3/16" diameter holes.
3. Tap plastic anchors provided into holes.
4. Place screws into anchors and tighten half the screw length.
5. Hang dispenser over screws using the keyholes in the back plate of the dispenser.
6. Tighten screws to secure the dispenser.

Mounting the 2L Triton™ Dispenser with Anchors and Screws:

(Recommended mounting method, anchors and screws are included.)



1. Using dispenser as a template, mark hole locations on wall. (To be in compliance with ADA regulations, the dispenser should be mounted no more than 48" from the ground.)
2. Drill (4) 3/16" diameter holes.
3. Tap plastic anchors provided into holes.
4. Place screws into anchors and tighten half the screw length.
5. Hang dispenser over screws using the keyholes in the back plate of the dispenser.
6. Tighten screws to secure the dispenser.